

ADDITIONAL PAPERS

LICENSING SUB COMMITTEE

Thursday, 14th December, 2023, 7.00 pm - Microsoft Teams (watch the live meeting [here](#) and watch the recording [here](#))

Councillors: Anna Abela (Chair), Barbara Blake and Nick da Costa

Quorum: 3

- 6. APPLICATION FOR A VARIATION OF A PREMISES LICENCE AT HORNSEY TOWN HALL ARTS CENTRE, HORNSEY TOWN HALL, THE BROADWAY, CROUCH END, LONDON N8 9BQ (HORNSEY) (PAGES 1 - 48)**

To consider an application for a variation of a premises licence.

Nazyer Choudhury, Principal Committee Co-ordinator
Tel – 020 8489 3321
Fax – 020 8881 5218
Email: nazyer.choudhury@haringey.gov.uk

Fiona Alderman
Head of Legal & Governance (Monitoring Officer)
George Meehan House, 294 High Road, Wood Green, N22 8JZ

Monday, 11 December 2023

This page is intentionally left blank



Licensing Authority
Haringey

Licensing Unit
Edmonton Police Station
462 Fore Street,
London
N9 0PW
PC Jade HAYNES 3719NA
Jade.haynes2@met.pnn.police.uk
www.met.police.uk

15th November 2023

Police Representation

APPLICATION FOR A PREMISES LICENCE VARIATION – HORNSEY TOWN HALL ARTS CENTRE, HORNSEY TOWN HALL, THE BROADWAY, CROUCH END, LONDON N8 9BQ

Dear Licensing Team,

This application is submitted by HORNSEY TOWN HALL ARTS CENTRE of the above business in regards to a premises licence variation **this is in connection to Licence LN/000015762.**

The police wish to make representations under the licencing objectives of, **Prevention of crime and disorder and Prevention of public nuisance.** We have concerns in regards to the Roof top terrace and also the Town square request.

The variations requested are as follows:

1. To update the Premises Licence Holder name from FEC Time + Space (UK) Limited to Hornsey Town Hall Arts Centre Limited and amend the registered office of the premises licence holder to 40-41 Furnival Street, London, EC4A 1JQ.
2. To amend the approved plan to:
 - a. Add Hornsey Town Hall Square
 - b. Add a café on the ground floor
 - c. Amend the area for licensable activities including the Co-Worker Space on the ground floor.
 - d. Add the Commercial Kitchen on the Lower Ground Floor.
 - e. Add the Cinema and Mayods Parlour on First Floor.
 - f. Remove licensable activities from the corridor on the First Floor.
 - g. Add Food and Beverage Bar and Chamber Balcony on the Second Floor.
 - h. Add Roof Terrace on Roof.
3. To increase the terminal hour for all licensable activities

4. To increase the terminal hour for licensable activities on Bank Holidays and the day preceding a Bank Holiday to 0130 the following morning closing at 0200.
5. To increase the terminal hour for New Year's Eve and New Year's Day so that the terminal hour for licensable activities for New Year's Eve is the start of permitted hours on New Year's Day other than in The Town Hall Square when hours for licensable activities are sought from 1000 to 0100.
6. To add late night refreshment on Mondays to Wednesdays from 2300 to 2330.
7. To extend the opening hours 7 days per week — see the box below for opening hours.
8. To replace Annex 2 conditions with the conditions accompanying this application

Regulated Entertainment: Plays

Monday to Wednesday	1000 to 2330 hours
Thursday to Saturday	1000 to 0130 hours
Sunday	1000 to 2245 hours

Hours for Supper Room:

Monday to Wednesday	1000 to 2330 hours
Thursday to Saturday	1000 to 0200 hours
Sunday	1000 to 2245 hours

Hours for Town Hall Square:

Monday to Sunday	1000 to 2100 hours
------------------	--------------------

Films

Monday to Wednesday	1000 to 2330 hours
Thursday to Saturday	1000 to 0130 hours
Sunday	1000 to 2245 hours

Hours for Supper Room:

Monday to Wednesday	1000 to 2330 hours
Thursday to Saturday	1000 to 0200 hours
Sunday	1000 to 2245 hours

Hours for Town Hall Square:

Monday to Sunday 1000 to 2100 hours

Hours for Roof Terrace:

Monday to Sunday 0800 to 2300 hours

Indoor Sporting Events

Monday to Wednesday 1000 to 2330 hours

Thursday to Saturday 1000 to 0130 hours

Sunday 1000 to 2245 hours

Hours for Supper Room:

Monday to Wednesday 1000 to 2330 hours

Thursday to Saturday 1000 to 0200 hours

Sunday 1000 to 2245 hours

Live Music, Recorded Music and Performance of Dance

Monday to Wednesday 1000 to 2330 hours

Thursday to Saturday 1000 to 0130 hours

Sunday 1000 to 2245 hours

Hours for Supper Room:

Monday to Wednesday 1000 to 2330 hours

Thursday to Saturday 1000 to 0130 hours

Sunday 1000 to 2245 hours

Hours for Town Hall Square:

Monday to Sunday 1000 to 2100 hours

Late Night Refreshment

Monday to Wednesday 2300 to 2330 hours

Thursday to Saturday 2300 to 0130 hours

Hours for Supper Room:

Monday to Wednesday 2300 to 2330 hours

Thursday to Saturday 2300 to 0200 hours

Sale of Alcohol

Monday to Wednesday 1100 to 2330 hours
Thursday to Saturday 1100 to 0130 hours
Sunday 1100 to 2245 hours

Hours for Supper Room:

Monday to Wednesday 1000 to 2330 hours
Thursday to Saturday 1000 to 0200 hours
Sunday 1000 to 2245 hours

Hours for Town Hall Square:

Monday to Sunday 1000 to 2300 hours

Supply of alcohol **ON** and **OFF** the premises.

Non started Timings for all licensable activities: Bank Holidays and the day preceding a Bank Holiday (except for the Supper Room when a Bank Holiday or the day preceding a Bank Holiday falls on a Thursday, Friday or Saturday and the Town Hall Square where standard hours apply) to 0130 the following morning.

Other than for the Town Hall Square from the end of permitted hours on New Year's Eve until the start of permitted hours on New Year's Day.

From 1000 to 0100 the following morning on New Years Eve for the Town Hall Square.

Hours open to Public

Monday to Wednesday 0700 to 2330 hours
Thursday 0700 to 0030 hours
Friday to Saturday 0700 to 0230 hours

Hours for Supper Room:

Monday to Wednesday 1000 to 2330 hours

Thursday to Saturday 1000 to 0230 hours

Sunday 1000 to 2245 hours

Hours for Town Hall Square:

Monday to Sunday 0000 to 0000 hours

Hours for Roof Terrace:

Monday to Sunday 0800 to 2300 hours

Non-standard Timings: Bank Holidays and the day preceding a Bank Holiday (except for the Supper Room when a Bank Holiday or the day preceding a Bank Holiday falls on a Thursday, Friday or Saturday and the Roof Terrace where standard hours apply) to 0230 the following morning.

Other than the Roof Terrace from the end of permitted hours on New Year's Eve until the start of permitted hours on New Year's Day.

The geographical location of the venue is set on a fairly busy high road. There are also a number of residential roads within close proximity of the venue. This is next to a bus stop however although this could help with dispersal it could also encourage guests loitering in the area. There are train stations within proximity to the venue which is a short walk away, this could help with dispersal however it could also result in being unsafe for intoxicated people with passing vehicles. This could also pose a danger to vulnerable guests which could enter and attend the venue if they cannot afford a room at the premises or a taxi later that night, this would be another high concern for police in relation to **VAWG** (violence against women & Girls) which is a priority topic at this current time to the point where the police are setting Ten new commitments on how to reduce this and public meetings are taking place in regards to this, the one for Haringey borough was held on 26th October.

We the police have assessed the application and the Operating schedule submitted by the applicant describing the steps intended to be taken in order to promote the four Licensing Objectives of:

- 1) **The Prevention Of Crime and Disorder**
- 2) **Public Safety**
- 3) **The prevention of Public Nuisance**
- 4) **The protection of children from Harm**

However, we the police have a number of concerns in regards to the applications. The concerns police have relate to the following:

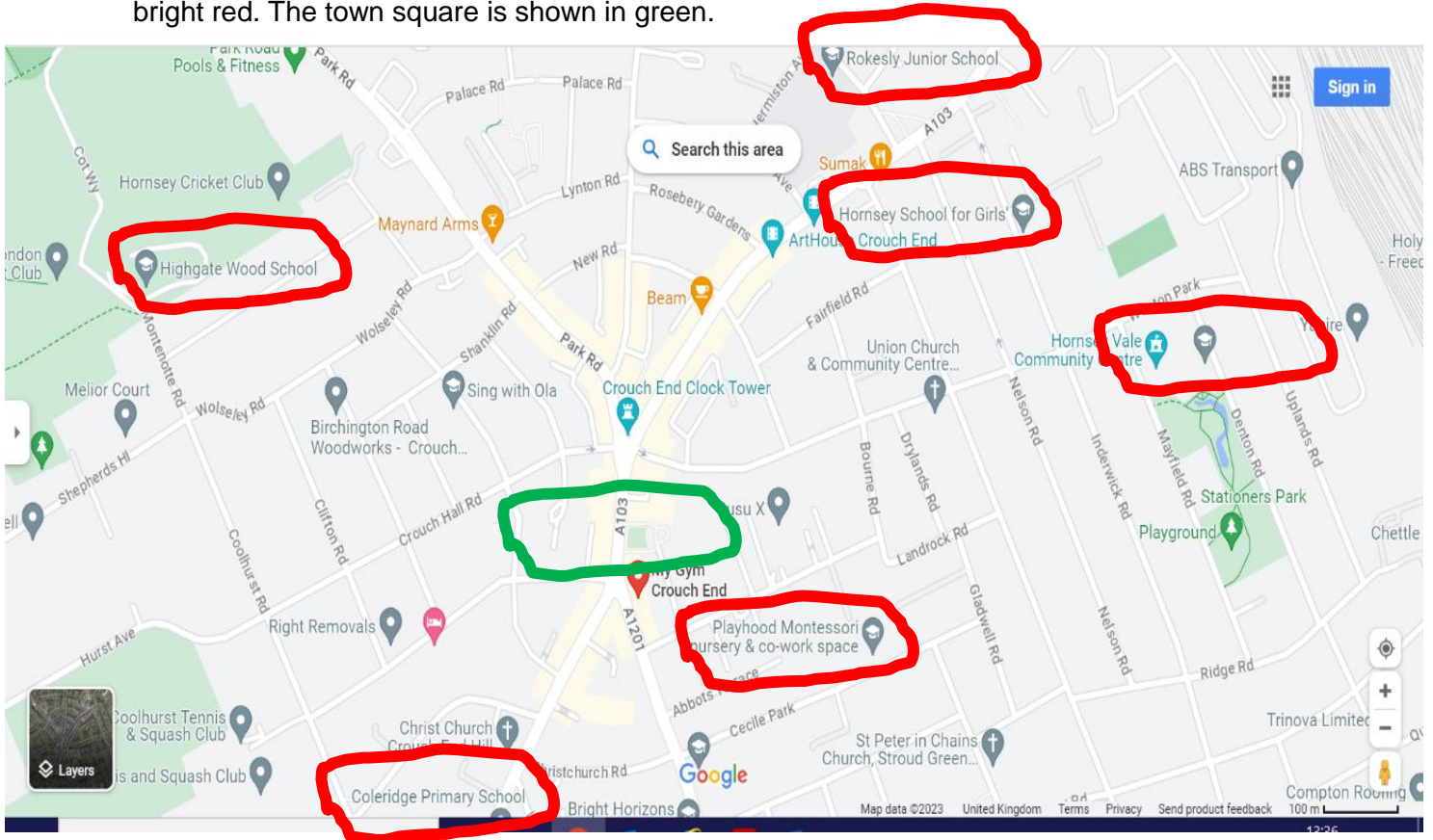
- The management and safety of the roof top terrace.
- The Town hall square.

The plan for town hall square which was submitted is shown below and then following that is a picture from the front of the view of the square:

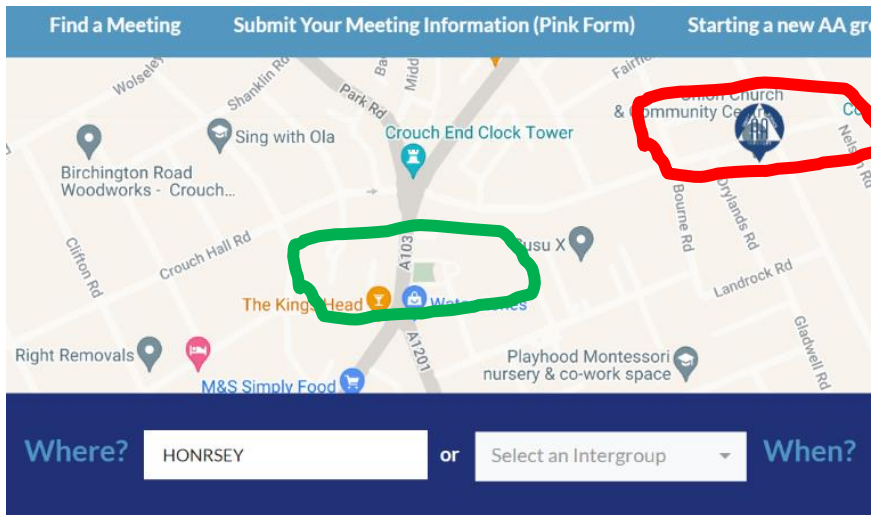


As you can see from the above this is extremely close to the road and the terminal hour for the supply of alcohol requested is 2300hours. This could prove dangerous for members of the public especially once intoxicated.

Further to this, there are multiple schools near this venue, this could impact children in the locality on their day to day life coming to and from school. These are vulnerable children who would have to come passed this open space which would now be permitting alcohol throughout the day until late at night. The below picture shows an idea of just how many schools and how many vulnerable children could pass through here. The educational premises are circled in bright red. The town square is shown in green.



There is also an Alcoholics Anonymous venue one road down from this venue. People recovering from this could be on their way home past the town square and could be drawn in by the atmosphere and drinks being directly in front of them in an open space. This could damage their recovery. This is not the same as a bar or pub. As this would be outdoors in an open space which is open to the public and would be hard to avoid walking past.



Further to this, the venue is imbedded on a busy high street with residents living in the vicinity to the venue. The members of public also have access to this square, allowing alcohol until 2300hours is essentially allowing street drinking at the location, this is a high factor to ASB which is a common complaint in the borough. Without a substantial dispersal plan in place, it would give a detrimental effect on the immediate residents and impact their day to day life and this would be needed to stop the natural noise of intoxicated people leaving the venue at the early hours. The dispersal alone of people awaiting to leave whether on foot, by taxi, or by bus will still generate a loitering purpose within the location. This will be a permanent hour for the premises, it could cause a huge impact on local residents. Although you could argue that there is a bus stop directly outside the venue and that this will disperse people quickly, it also gives a route directly outside for more new comers/guests to come. How will this be managed? With regards to bus's most time tables will be every 10 minutes IF there are no delays, however 10 minutes is a long time for party goes to disrupt the lively hood of locals, not to mention this could cause an increase on alcohol fuelled crime and disorder in the locality.

We therefore ask the following of the applicant

- 1) **What is the dispersal policy?**
- 2) **What is the 24 hour security policy?**
- 3) **Are there any plans in regards to safety around the Town Square?**

> **What events are being held here?**

> **How will the natural noise of people and intoxicated people be limited outside with a 2300hours alcohol end time?**

>**How are people going to be safeguarded from the road?**

>How is the view of 'street drinking' going to be eliminated?

>There are schools nearby, how are the children going to be safeguarded from this? This could be a route they take home?

>When there are events being held, how is the entry to these going to be managed when it is an open space?

4) In regards to the roof top terrace, what provisions will be put in place to prevent any horrific accidents, eg someone falling from the top.

In summary

We the Police **object** to the below points in the applications under **Prevention of Crime and Disorder and Prevention of public nuisance.**

- 1) To amend the approved plan to:
 - Add Hornsey Town Hall Square
 - Add Roof Terrace on Roof.

It is feared that without a detailed plan this may not be able to be managed. If there is not a limit to people entering the square on a day to day basis or for events, the numbers could get significantly high quickly. If the area is still open to the public this may be too late to conduct a risk assessment early enough do have adequate security as stated in the applicants operating schedule. A lot of children as shown will be exposed the consumption of alcohol as shown above, It may seem that it is just a drink but the effects of alcohol can be the same of which a drug would give, it effects a person cognitive functions and this could not only promote drinking to younger children it could also highlight a street drinking problem, people could purchase alcohol in a local shop and then sit in the town square as it would then be hard to know whether it was or wasn't purchased from the venue.

Furthermore the police give the applicant to respond to this representations with conditions which can rectify and dissolve these concerns. Should the applicant take away these concerns the police will withdraw their representations. Please respond no later than SUNDAY 19th NOVEMBER 2023.

I reserve the right to provide further information to support this representation.

Regards,



PC HAYNES 3719NA

North Area Licensing Officer

This page is intentionally left blank

Bringing Hornsey Town Hall Back to Life



Our Heritage



→ It all started in 1933 when a competition was held by the Hornsey Borough Council to find an architect to oversee the building of their new offices in Crouch End. Reginald Uren's design won the architectural competition out of over 200 entries.

→ The doors opened to the now modernist art-deco icon, Hornsey Town Hall, in 1935. Uren was later awarded the RIBA bronze award, naming his design the best building in London of that year.

The History of Hornsey Town Hall

1933



Architect Reginald Uren wins design competition to build the Councils' new headquarters.

1950

UK General Election results announced on the Committee Room balcony, filmed by the BBC.



1963

Hosts Valentine's Day concert by 'The Ray Davies Quartet', later to become The Kinks.



1971

QUEEN play one of their first ever gigs at Hornsey Town Hall.



2015

Hornsey Town Hall Arts Centre was started by ANA – building used for silent discos, yoga, workspace, gallery space and community events.



2003

"Peep Show" title sequence for Channel 4's BAFTA winning series filmed outside the Town Hall.



1987

Town Hall finance department agree it is too costly to keep the Town Hall open as a working building, and it is closed.

2016-18

FEC (Far Eastern Consortium) applies for planning permission to restore the building and open a hotel, arts centre and 146 flats on the site.



2019

'CREATE' event is held to celebrate the future of HTH. The doors are then closed, with Ardmore, the appointed contractor, starting the restoration.



2023

Grand Re-opening.



Our Spaces →



The Assembly Hall





The Function Room

The Committee Room



The Council Chamber





HILTONSOUNDSEY

The Supper Room

The Rooftop



The Members Room





The Mayor's Parlour



The Cinema

The Town Hall Square



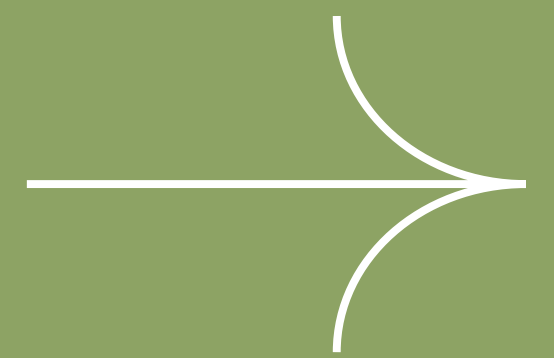
Room Use Guide

* Colour Key: The darker the colour, the more suitable the space for your event type.

		SPECIAL OCCASIONS				PERFORMANCE + BOX OFFICE						
		Weddings	Family Celebrations	Private Dining	Birthdays	Performing Arts	Fairs + Festivals	Art Exhibitions	Pop-Up Screenings	Comedy Nights	Jazz Nights	Concerts + DJ Sets
Ground Floor	The Assembly Hall	Dark	Medium	Dark	Light	Very Dark	Dark	Dark	Dark	Dark	Dark	Dark
	The Function Room	Medium	Medium	Light	Dark	Light	Dark	Dark	Light	Light	Light	Light
1st Floor	The Committee Room	Dark	Dark	Medium	Dark	Dark	Dark	Dark	Light	Light	Light	Light
	The Council Chamber	Medium	Light	Light	Light	Dark	Dark	Light	Dark	Dark	Dark	Dark
	The Mayor's Parlour	Dark	Light	Light	Light	Light	Light	Dark	Light	Light	Light	Light
2nd Floor	The Members Room	Light	Light	Medium	Light	Light	Light	Light	Light	Light	Light	Light
	The Cinema	Medium	Light	Light	Dark	Light	Light	Dark	Dark	Light	Light	Light
Lower Ground	The Rooftop	Light	Medium	Medium	Dark	Light	Dark	Light	Dark	Dark	Dark	Light
	The Supper Room	Dark	Dark	Dark	Light	Dark	Light	Dark	Dark	Dark	Dark	Dark

		PRIVATE + CORPORATE FUNCTIONS				CREATIVE EDUCATION		HEALTH+WELLBEING				
		Round Table Dinners	Conventions	Product Launches	Meetings	Lectures + Seminars	Skills + Training	Martial Arts Classes	Dance + Exercise	Yoga + Pilates Classes	Support Groups	Workshops
Ground Floor	The Assembly Hall	Dark	Dark	Medium	Light	Dark	Light	Light	Light	Light	Light	Light
	The Function Room	Medium	Medium	Medium	Light	Dark	Dark	Dark	Dark	Dark	Dark	Dark
1st Floor	The Committee Room	Medium	Dark	Medium	Medium	Light	Light	Dark	Dark	Dark	Dark	Dark
	The Council Chamber	Light	Dark	Dark	Light	Dark	Dark	Light	Light	Light	Light	Dark
	The Mayor's Parlour	Light	Light	Light	Dark	Dark	Light	Light	Light	Light	Dark	Dark
2nd Floor	The Members Room	Light	Light	Light	Dark	Dark	Dark	Light	Light	Dark	Dark	Dark
	The Cinema	Light	Medium	Medium	Light	Light	Light	Light	Light	Light	Light	Light
Lower Ground	The Rooftop	Light	Light	Medium	Light	Light	Light	Dark	Dark	Dark	Dark	Dark
	The Supper Room	Dark	Light	Medium	Medium	Dark	Dark	Light	Dark	Dark	Dark	Dark

Floorplans



THE ASSEMBLY HALL

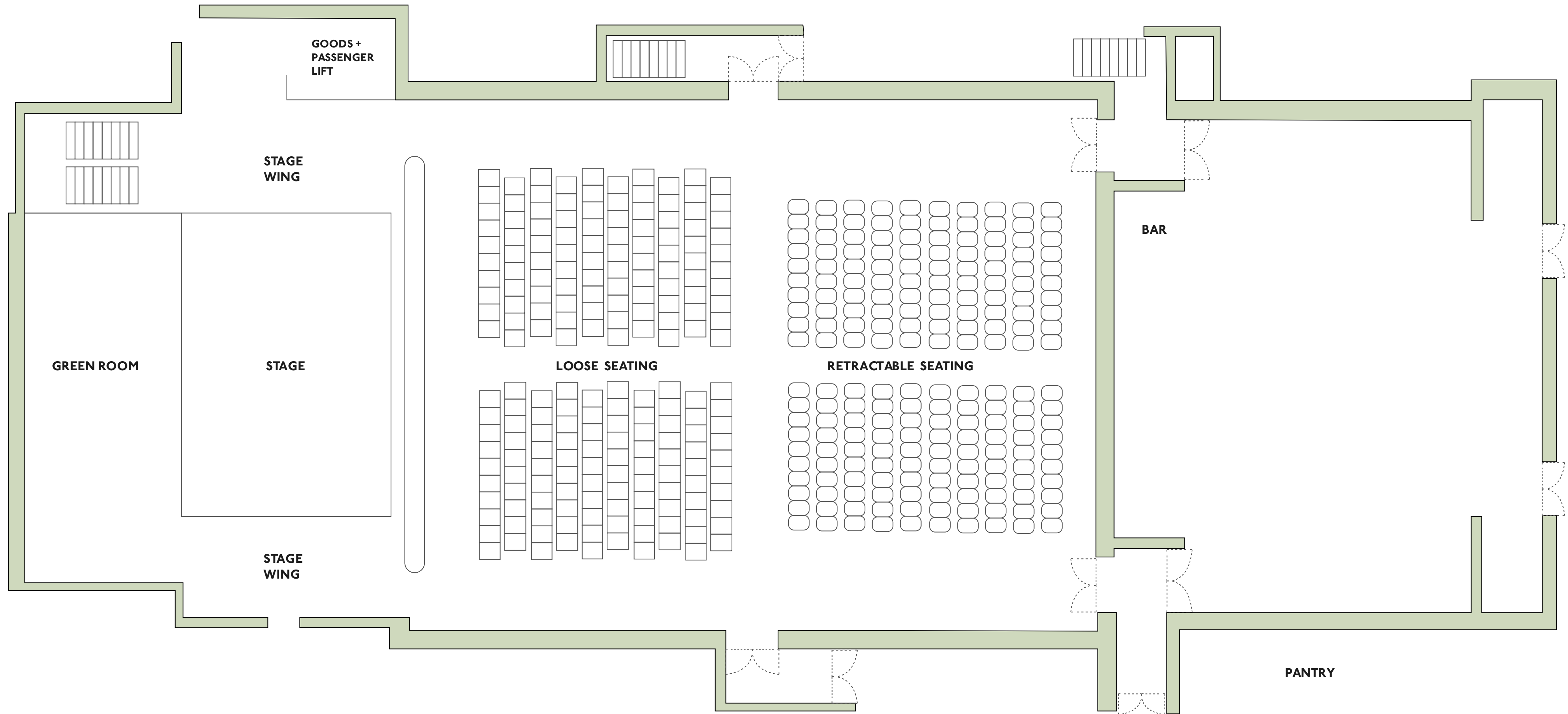
Area: 3,777 sq ft

Dimensions:
80ft (length) x 47ft (width)

THE FUNCTION ROOM

Area: 1,614 sq ft

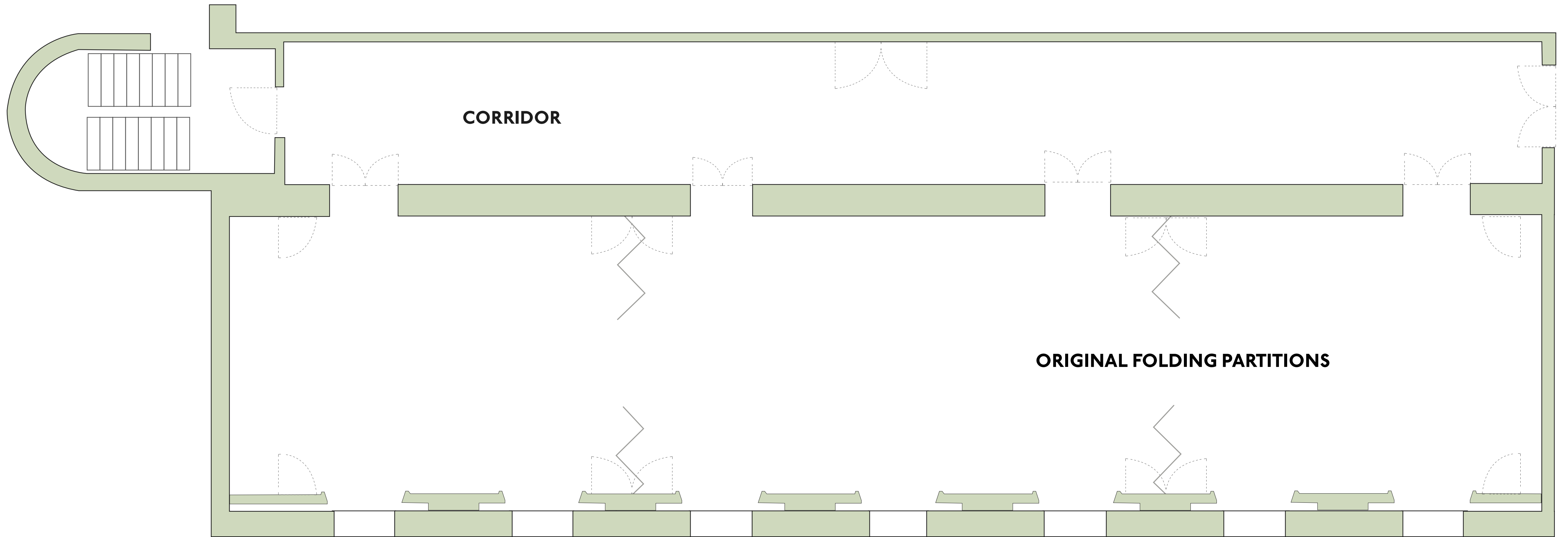
Dimensions:
36ft (length) x 45ft (width)



THE COMMITTEE ROOM

Area: 1,323 sq ft

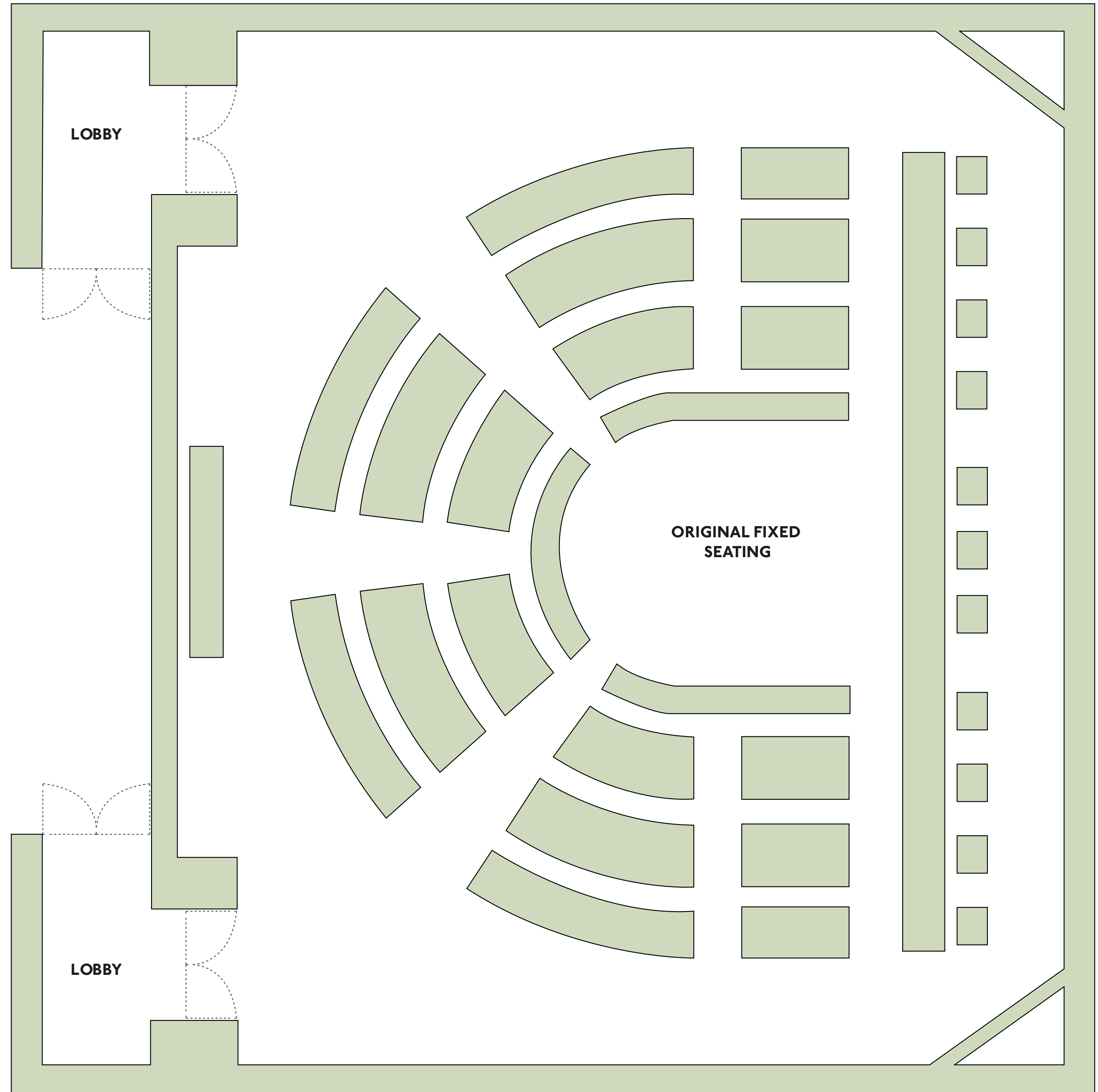
Dimensions:
75ft (length) x 18ft (width)

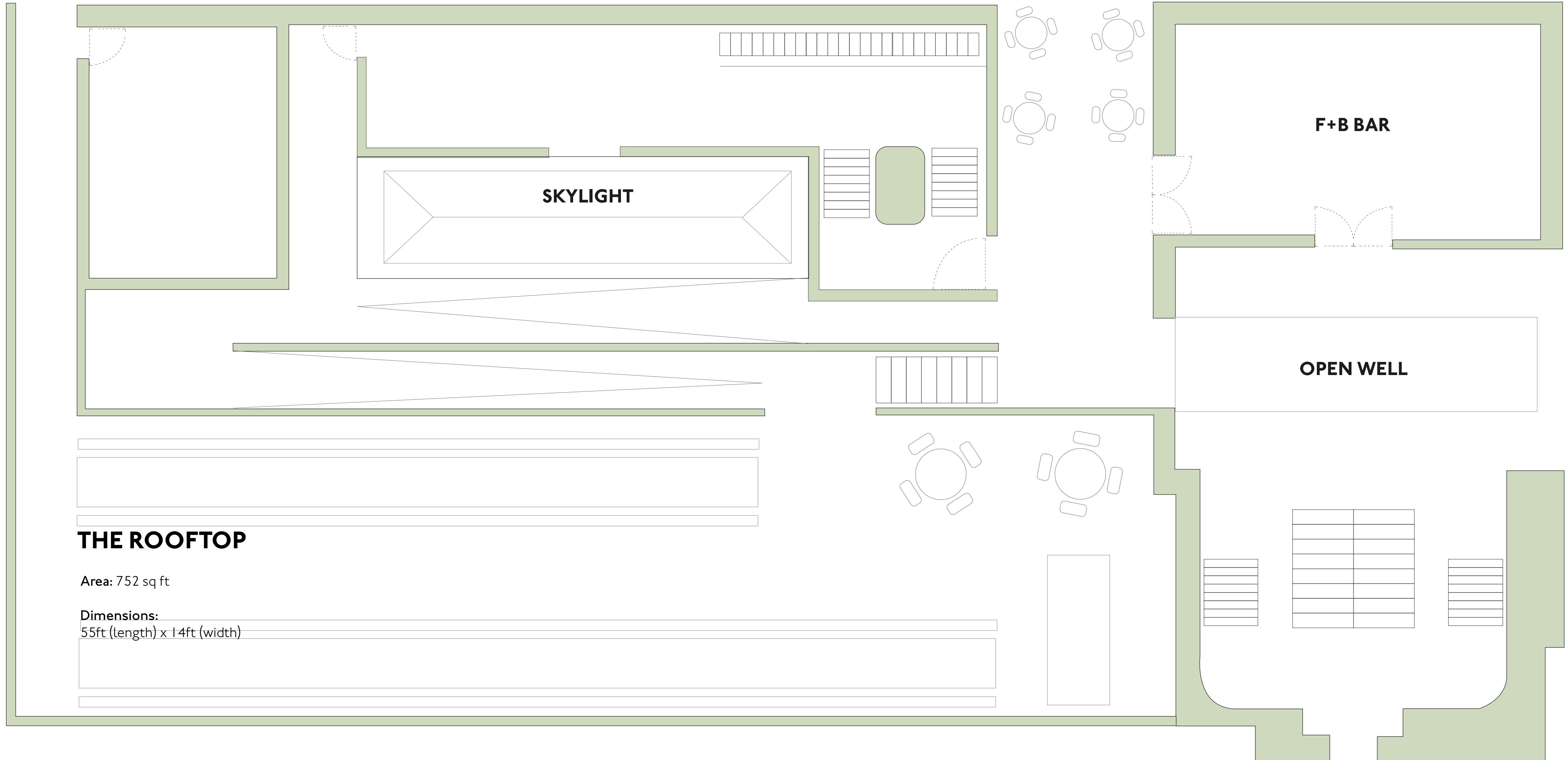


THE COUNCIL CHAMBER

Area (with viewing gallery): 2,197 sq ft
Area: 1,197 sq ft

Dimensions:
48ft (length) x 40ft (width)

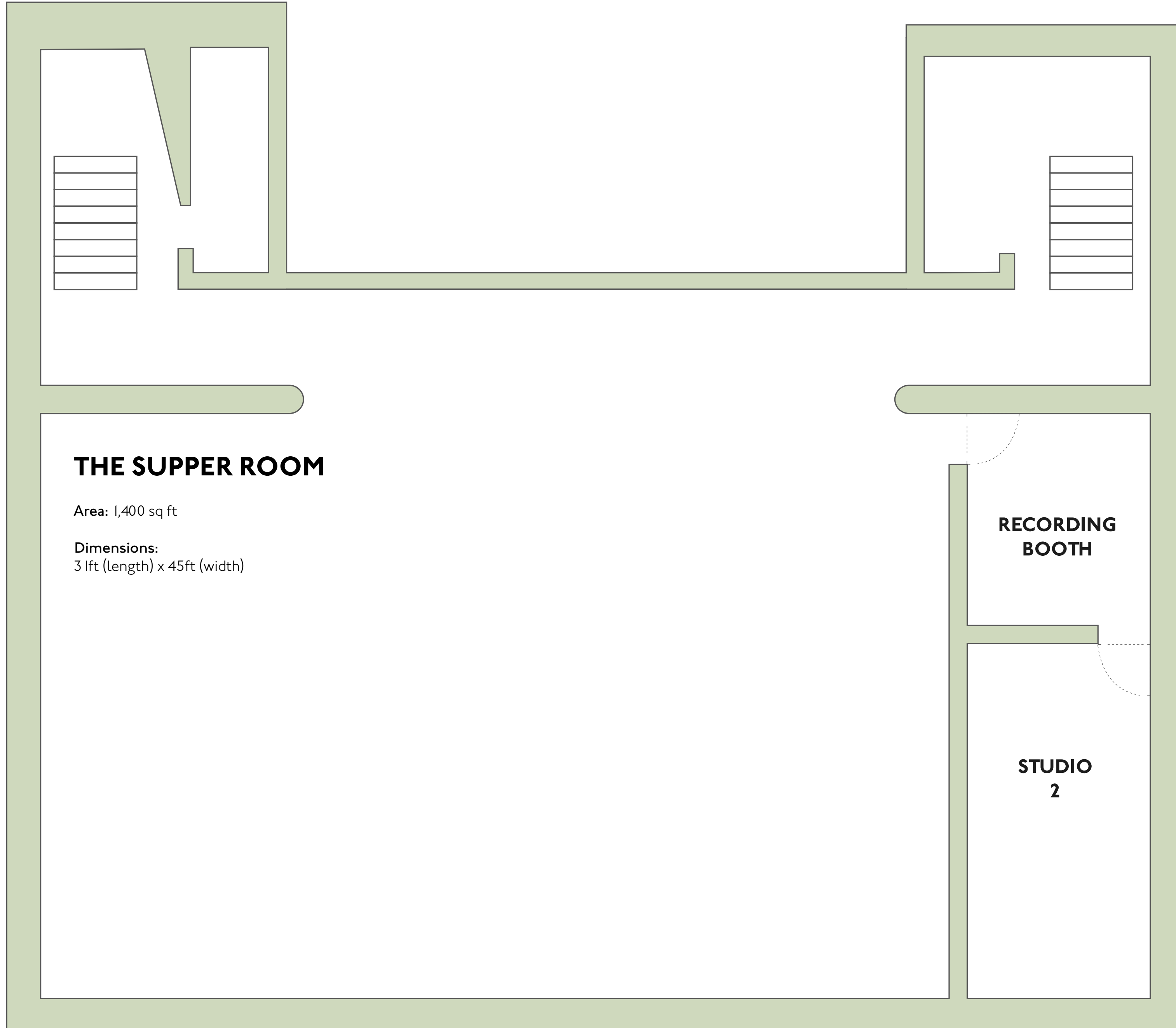




THE ROOFTOP

Area: 752 sq ft

Dimensions:
55ft (length) x 14ft (width)



THE SUPPER ROOM

Area: 1,400 sq ft

Dimensions:
31ft (length) x 45ft (width)


**RECORDING
BOOTH**

**STUDIO
2**

Our Five Key Pillars

THE ARTS CENTRE

Performance
Events
Workspace
Socialise
Create



Performance

Enjoy a vibrant lineup of events, including music, comedy, theatre, dance and more.



THE ARTS CENTRE

Performance
Events
Workspace
Socialise
Create



Events

Hire one of our restored heritage spaces and enjoy first-class hospitality and cutting-edge tech.



THE ARTS CENTRE

Performance
Events
Workspace
Socialise
Create



Workspace

Reinvent the way you work with a flexible workspace memberships tailored to creatives.



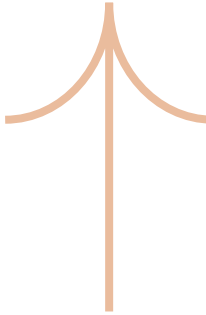
THE ARTS CENTRE

Performance
Events
Workspace
Socialise
Create



Socialise

Meet, greet and entertain at one of our bars, restaurants, panoramic rooftop or unique cinema experience.



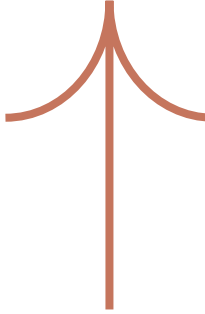
THE ARTS CENTRE

Performance
Events
Workspace
Socialise
Create



Create

Discover your space to create as Hornsey Town Hall fills with activity once more.





Performance

- Performances will include live music concerts, dance recitals, theatre shows, comedy nights, DJ sets, talks, conferences and many more.
- We've received enquiries from the likes of Tears For Fears, North London Symphony Orchestra, Stagecoach Performing Arts, Rough Trade, DICE and more.

Events



→ We will host a vast and wide-ranging array of events including weddings, family celebrations, birthdays, fairs + festivals, art exhibitions, round table dinners, conventions, product launches, martial arts classes, dance and exercise classes, support groups and more.

→ Enquiries include weddings, art exhibitions, family celebrations (inc. Bar and Bat Mitzvahs, Holy Communion and a baby shower), birthday parties, dance and exercise classes amongst many others.

Workspace



- There will be two dedicated workspace areas in the Town Hall; The Gallery on the ground floor and The Assembly Loft on the upper floor.
- Workspace memberships are available from casual lounge memberships, more permanent fixed memberships and dedicated studio memberships.
- We've had hundreds of enquiries for Workspace Memberships from professionals working across design, tech, Film & TV, PR, fashion and many more creative sectors.

Socialise



→ On completion you'll be able to socialise in one of our refurbished spaces dedicated to food and drink, from cake and coffee in our house café, alfresco dining on the Town Hall Square, or relaxing in one of our restaurants and panoramic Rooftop Bar.



Let's Get Social!
Become a Social Member

→ hthartscentre.com

Benefits include

No
box office
fees



Priority
bookings



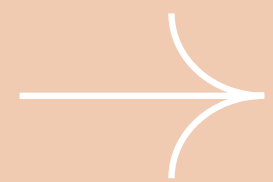
Access to
special
preview
events



Reduced
ticket prices
on selected
events



Discounts
on food
+ drinks



Hornsey Town Hall Arts Centre offers the exciting opportunity to join as a Social Member and enjoy exclusive perks and discounts once the Town Hall reopens.

 
@hthartscentre
#TownHallReborn



hthartscentre.com

Create

We have received multiple requests for community bookings, including recurring event and performance related activities including:

- Dance classes
- Multiple art workshops
- Yoga and wellbeing classes
- Children's music+art classes
- Roller skating events
- Makers' workshops



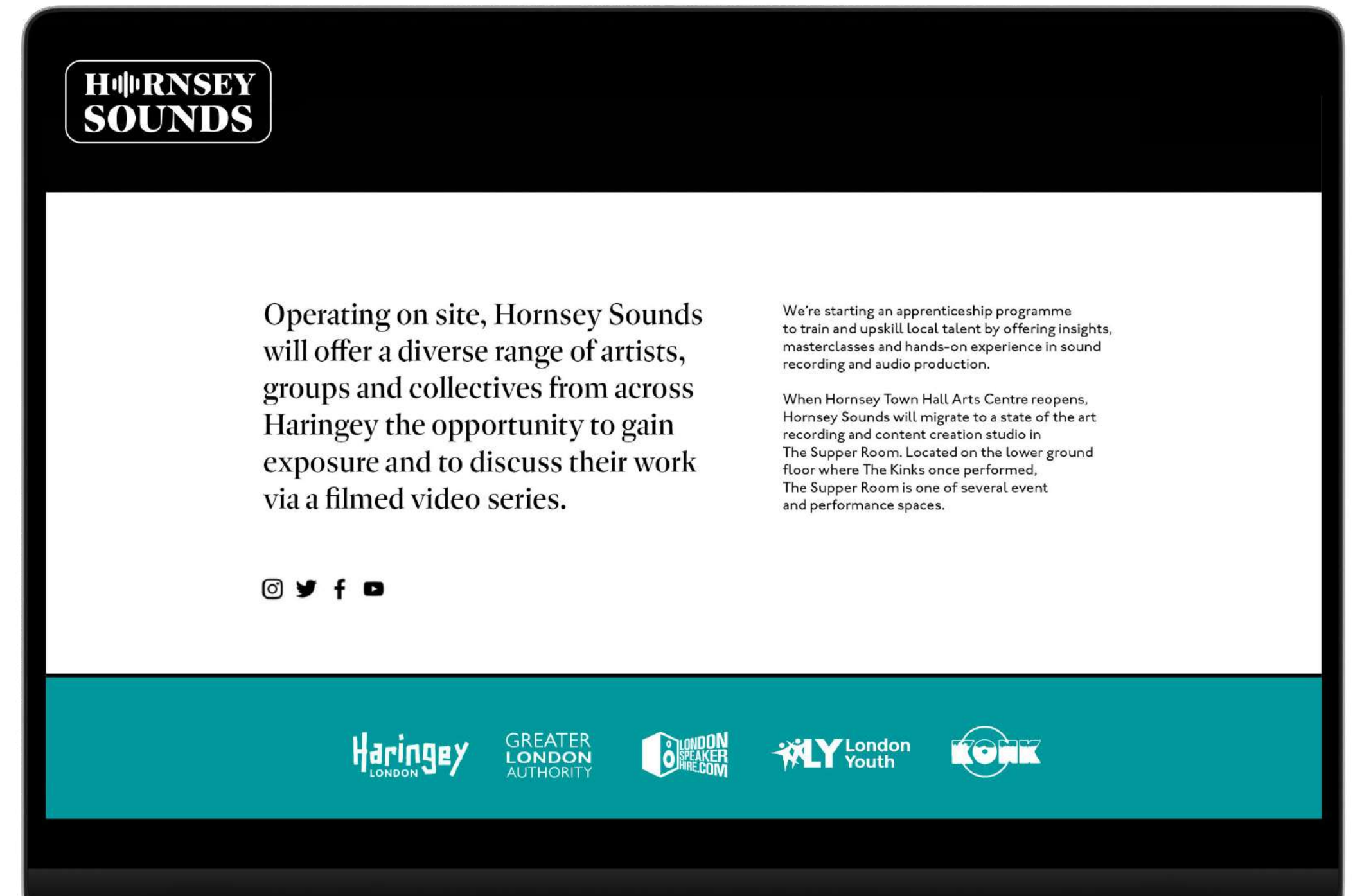
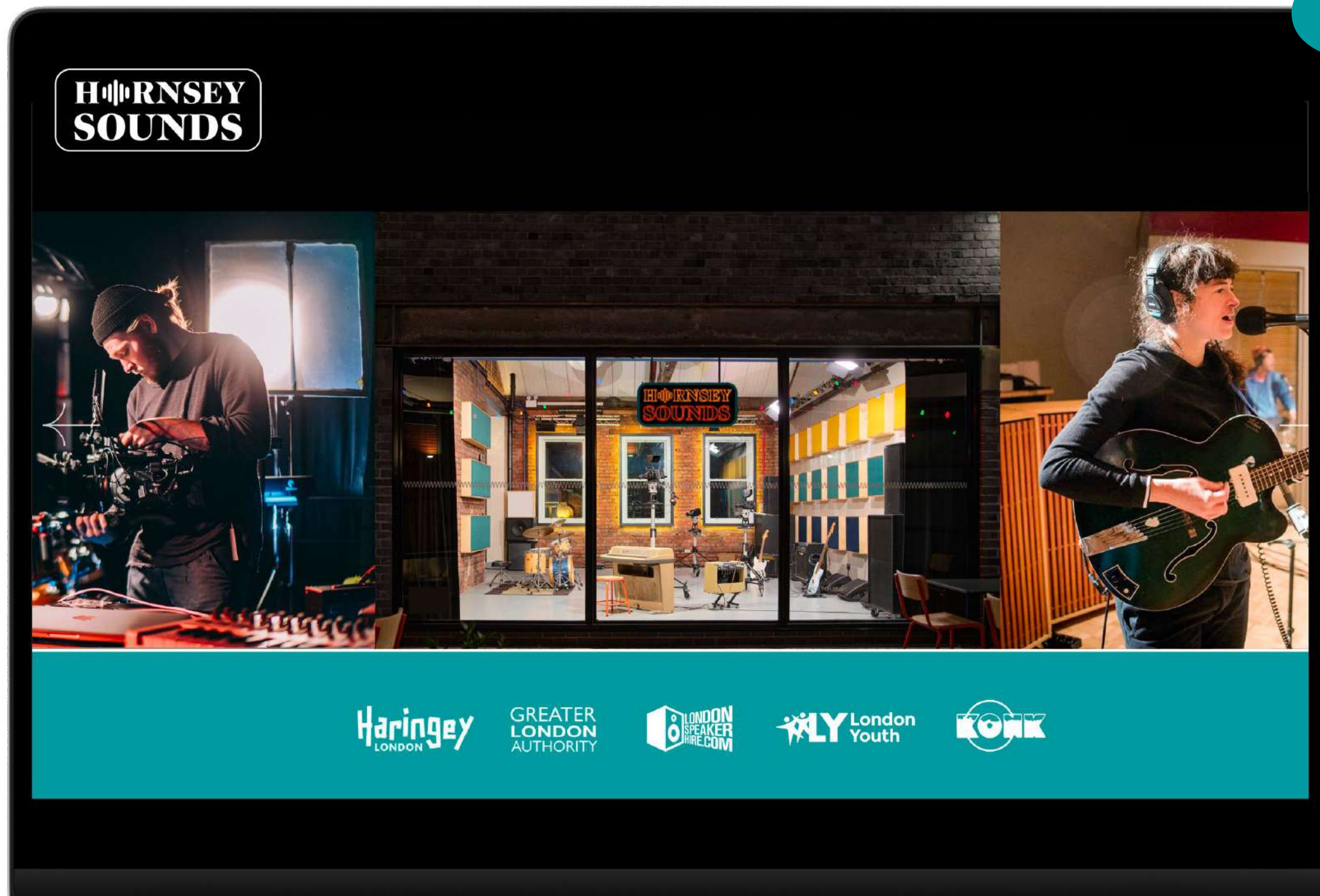


→ Hornsey Town Hall Arts Centre has launched Hornsey Sounds, supporting Haringey's international reputation for music and the birthplace of artists such as Adele, Skepta and Wretch 32.

→ Operating on site, Hornsey Sounds will offer a diverse range of artists, groups and collectives from across Haringey the opportunity to gain exposure and to discuss their work via a filmed video and live event series.

→ We will be starting an apprenticeship programme to train and upskill local talent by offering insights, masterclasses and hands-on experience in sound recording and audio production.

Training + Skills

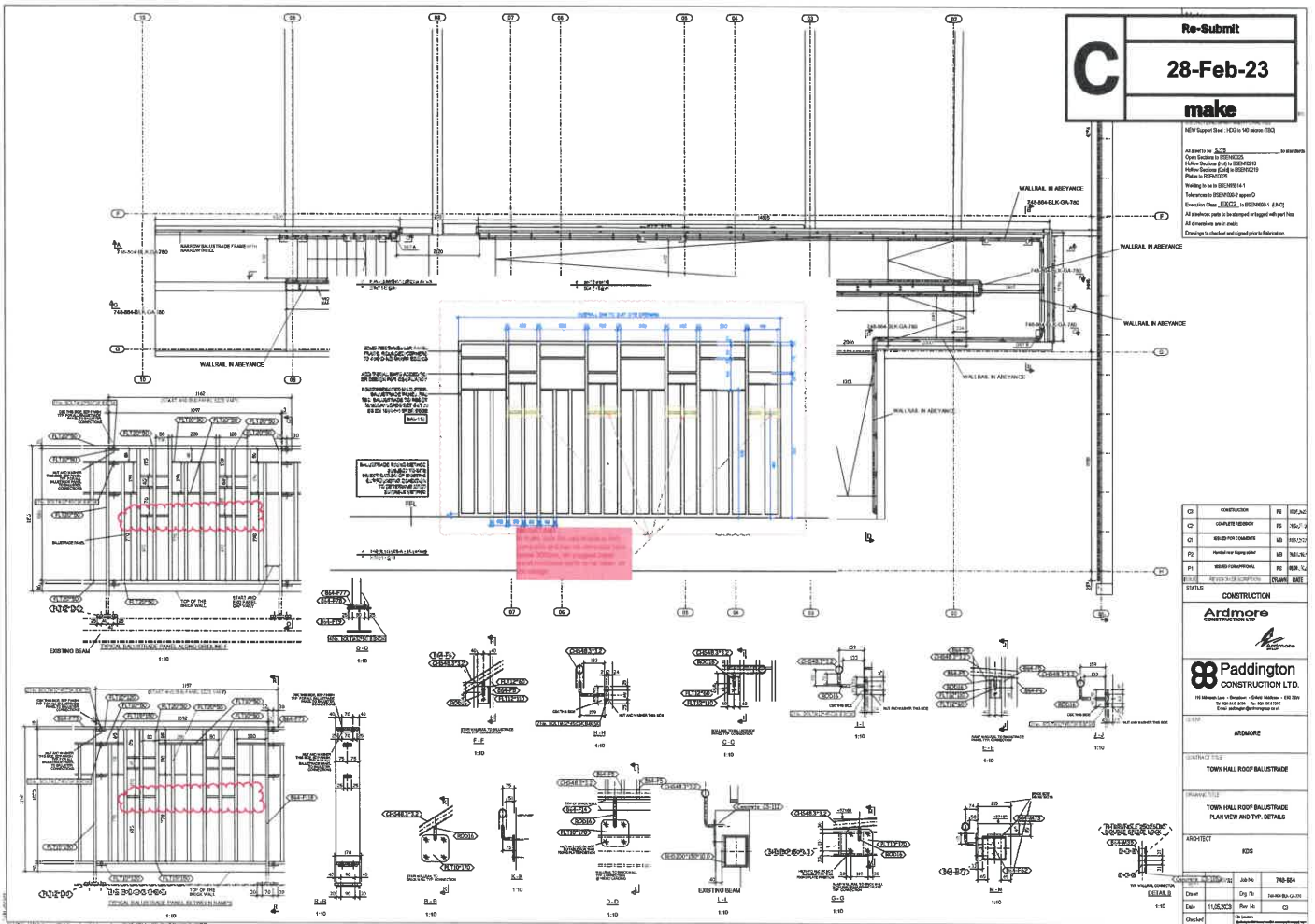


→ This Hornsey Sounds initiative, will work in collaboration with nationally recognised educational, skills and technical partners and is designed to showcase, train and upskill the next generation of talent.

19 **TH** 35 **THE
ARTS
CENTRE**

#TownHallReborn

This page is intentionally left blank



C Re-Submit
28-Feb-23
make

MEM Support Draw - ECG to MD memo (15/3)
 All work to be done in accordance with the following:
 Open Contract by BS1192:2019
 Minimum Contract by BS1192:2019
 Minimum Contract by BS1192:2019
 Minimum Contract by BS1192:2019
 Working to be in accordance with BS1192:2019
 Reference to BS1192:2019
 Execution Date: 28/02/23 in accordance with BS1192:2019
 All drawings shall be stamped and signed off per the
 All drawings are to be done
 Drawings to include and signed per the following:

CD	DESCRIPTION	BY	DATE
CD	CONSTRUCTION	TR	15/02/23
CD	CONSTRUCTION	MD	15/02/23
CD	CONSTRUCTION	MD	15/02/23
CD	CONSTRUCTION	MD	15/02/23
CD	CONSTRUCTION	MD	15/02/23
CD	CONSTRUCTION	MD	15/02/23

CONSTRUCTION
Ardmore
 CONSTRUCTION LTD.
88 Paddington
 CONSTRUCTION LTD.
 88 Wood Lane - London - Stock Market - L8 2TU
 Tel: 020 7461 1000
 Email: info@ardmoreconstruction.co.uk

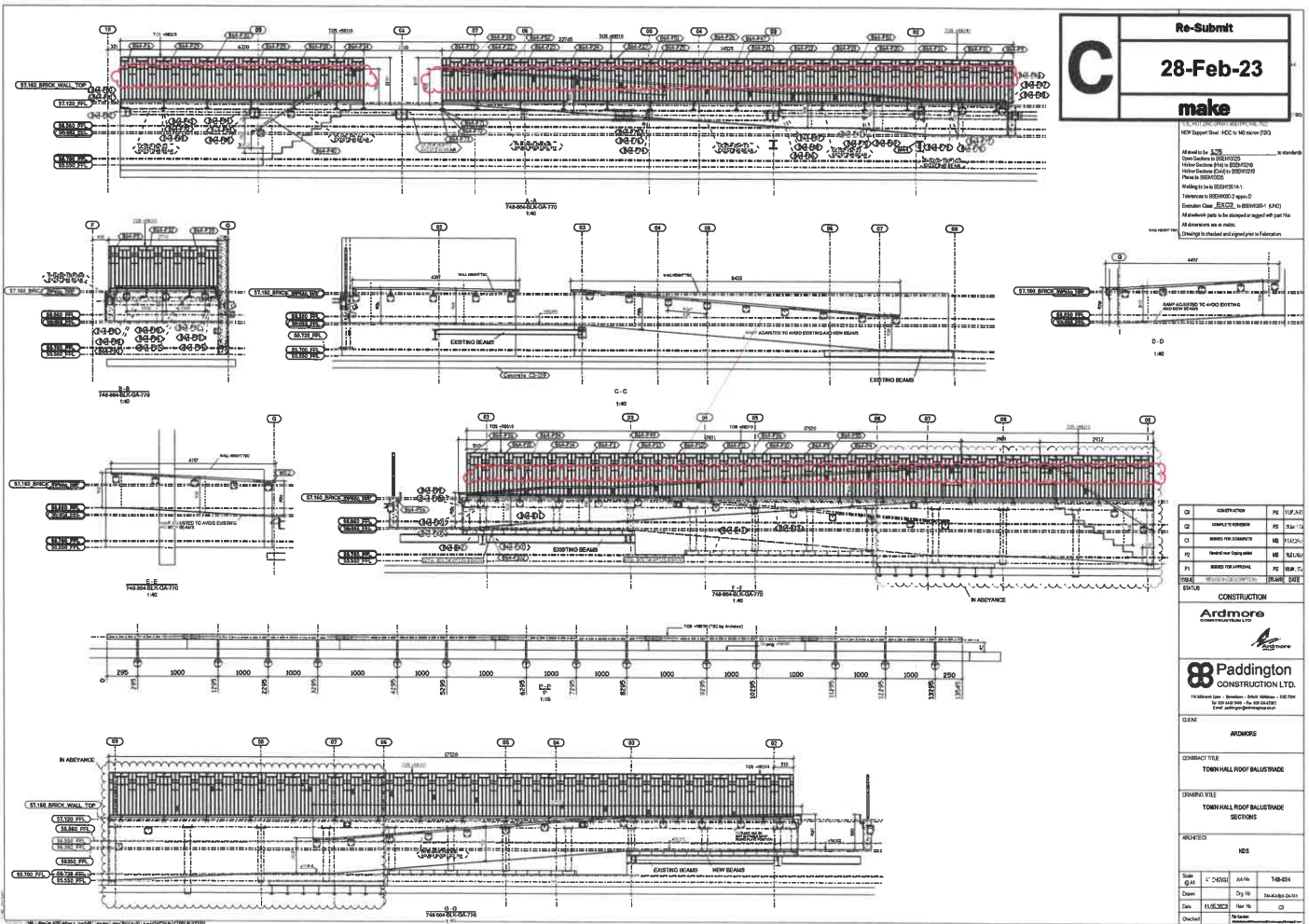
PROJECT: ARDMORE

CONTRACT TITLE: TOWN HALL ROOF BALLUSTRADE

FRAME TITLE: TOWN HALL ROOF BALLUSTRADE PLAN VIEW AND TYP. DETAILS

ARCHITECT: RGS

DATE	BY	NO.	DESCRIPTION
15/02/23	TR	1	ISSUED FOR CONSTRUCTION
15/02/23	MD	2	ISSUED FOR CONSTRUCTION
15/02/23	MD	3	ISSUED FOR CONSTRUCTION
15/02/23	MD	4	ISSUED FOR CONSTRUCTION
15/02/23	MD	5	ISSUED FOR CONSTRUCTION
15/02/23	MD	6	ISSUED FOR CONSTRUCTION
15/02/23	MD	7	ISSUED FOR CONSTRUCTION
15/02/23	MD	8	ISSUED FOR CONSTRUCTION
15/02/23	MD	9	ISSUED FOR CONSTRUCTION
15/02/23	MD	10	ISSUED FOR CONSTRUCTION
15/02/23	MD	11	ISSUED FOR CONSTRUCTION
15/02/23	MD	12	ISSUED FOR CONSTRUCTION
15/02/23	MD	13	ISSUED FOR CONSTRUCTION
15/02/23	MD	14	ISSUED FOR CONSTRUCTION
15/02/23	MD	15	ISSUED FOR CONSTRUCTION
15/02/23	MD	16	ISSUED FOR CONSTRUCTION
15/02/23	MD	17	ISSUED FOR CONSTRUCTION
15/02/23	MD	18	ISSUED FOR CONSTRUCTION
15/02/23	MD	19	ISSUED FOR CONSTRUCTION
15/02/23	MD	20	ISSUED FOR CONSTRUCTION
15/02/23	MD	21	ISSUED FOR CONSTRUCTION
15/02/23	MD	22	ISSUED FOR CONSTRUCTION
15/02/23	MD	23	ISSUED FOR CONSTRUCTION
15/02/23	MD	24	ISSUED FOR CONSTRUCTION
15/02/23	MD	25	ISSUED FOR CONSTRUCTION
15/02/23	MD	26	ISSUED FOR CONSTRUCTION
15/02/23	MD	27	ISSUED FOR CONSTRUCTION
15/02/23	MD	28	ISSUED FOR CONSTRUCTION
15/02/23	MD	29	ISSUED FOR CONSTRUCTION
15/02/23	MD	30	ISSUED FOR CONSTRUCTION
15/02/23	MD	31	ISSUED FOR CONSTRUCTION
15/02/23	MD	32	ISSUED FOR CONSTRUCTION
15/02/23	MD	33	ISSUED FOR CONSTRUCTION
15/02/23	MD	34	ISSUED FOR CONSTRUCTION
15/02/23	MD	35	ISSUED FOR CONSTRUCTION
15/02/23	MD	36	ISSUED FOR CONSTRUCTION
15/02/23	MD	37	ISSUED FOR CONSTRUCTION
15/02/23	MD	38	ISSUED FOR CONSTRUCTION
15/02/23	MD	39	ISSUED FOR CONSTRUCTION
15/02/23	MD	40	ISSUED FOR CONSTRUCTION
15/02/23	MD	41	ISSUED FOR CONSTRUCTION
15/02/23	MD	42	ISSUED FOR CONSTRUCTION
15/02/23	MD	43	ISSUED FOR CONSTRUCTION
15/02/23	MD	44	ISSUED FOR CONSTRUCTION
15/02/23	MD	45	ISSUED FOR CONSTRUCTION
15/02/23	MD	46	ISSUED FOR CONSTRUCTION
15/02/23	MD	47	ISSUED FOR CONSTRUCTION
15/02/23	MD	48	ISSUED FOR CONSTRUCTION
15/02/23	MD	49	ISSUED FOR CONSTRUCTION
15/02/23	MD	50	ISSUED FOR CONSTRUCTION
15/02/23	MD	51	ISSUED FOR CONSTRUCTION
15/02/23	MD	52	ISSUED FOR CONSTRUCTION
15/02/23	MD	53	ISSUED FOR CONSTRUCTION
15/02/23	MD	54	ISSUED FOR CONSTRUCTION
15/02/23	MD	55	ISSUED FOR CONSTRUCTION
15/02/23	MD	56	ISSUED FOR CONSTRUCTION
15/02/23	MD	57	ISSUED FOR CONSTRUCTION
15/02/23	MD	58	ISSUED FOR CONSTRUCTION
15/02/23	MD	59	ISSUED FOR CONSTRUCTION
15/02/23	MD	60	ISSUED FOR CONSTRUCTION
15/02/23	MD	61	ISSUED FOR CONSTRUCTION
15/02/23	MD	62	ISSUED FOR CONSTRUCTION
15/02/23	MD	63	ISSUED FOR CONSTRUCTION
15/02/23	MD	64	ISSUED FOR CONSTRUCTION
15/02/23	MD	65	ISSUED FOR CONSTRUCTION
15/02/23	MD	66	ISSUED FOR CONSTRUCTION
15/02/23	MD	67	ISSUED FOR CONSTRUCTION
15/02/23	MD	68	ISSUED FOR CONSTRUCTION
15/02/23	MD	69	ISSUED FOR CONSTRUCTION
15/02/23	MD	70	ISSUED FOR CONSTRUCTION
15/02/23	MD	71	ISSUED FOR CONSTRUCTION
15/02/23	MD	72	ISSUED FOR CONSTRUCTION
15/02/23	MD	73	ISSUED FOR CONSTRUCTION
15/02/23	MD	74	ISSUED FOR CONSTRUCTION
15/02/23	MD	75	ISSUED FOR CONSTRUCTION
15/02/23	MD	76	ISSUED FOR CONSTRUCTION
15/02/23	MD	77	ISSUED FOR CONSTRUCTION
15/02/23	MD	78	ISSUED FOR CONSTRUCTION
15/02/23	MD	79	ISSUED FOR CONSTRUCTION
15/02/23	MD	80	ISSUED FOR CONSTRUCTION
15/02/23	MD	81	ISSUED FOR CONSTRUCTION
15/02/23	MD	82	ISSUED FOR CONSTRUCTION
15/02/23	MD	83	ISSUED FOR CONSTRUCTION
15/02/23	MD	84	ISSUED FOR CONSTRUCTION
15/02/23	MD	85	ISSUED FOR CONSTRUCTION
15/02/23	MD	86	ISSUED FOR CONSTRUCTION
15/02/23	MD	87	ISSUED FOR CONSTRUCTION
15/02/23	MD	88	ISSUED FOR CONSTRUCTION
15/02/23	MD	89	ISSUED FOR CONSTRUCTION
15/02/23	MD	90	ISSUED FOR CONSTRUCTION
15/02/23	MD	91	ISSUED FOR CONSTRUCTION
15/02/23	MD	92	ISSUED FOR CONSTRUCTION
15/02/23	MD	93	ISSUED FOR CONSTRUCTION
15/02/23	MD	94	ISSUED FOR CONSTRUCTION
15/02/23	MD	95	ISSUED FOR CONSTRUCTION
15/02/23	MD	96	ISSUED FOR CONSTRUCTION
15/02/23	MD	97	ISSUED FOR CONSTRUCTION
15/02/23	MD	98	ISSUED FOR CONSTRUCTION
15/02/23	MD	99	ISSUED FOR CONSTRUCTION
15/02/23	MD	100	ISSUED FOR CONSTRUCTION



Re-Submit
C
28-Feb-23
make

Approved by: [Signature]
 Date: 28-Feb-23
 Drawn by: [Signature]
 Checked by: [Signature]
 Title: [Signature]
 Project: [Signature]
 Scale: [Signature]
 Date: [Signature]

01	CONSTRUCTION	10	10/10/23
02	CONSTRUCTION	10	10/10/23
03	CONSTRUCTION	10	10/10/23
04	CONSTRUCTION	10	10/10/23
05	CONSTRUCTION	10	10/10/23
06	CONSTRUCTION	10	10/10/23
07	CONSTRUCTION	10	10/10/23
08	CONSTRUCTION	10	10/10/23
09	CONSTRUCTION	10	10/10/23
10	CONSTRUCTION	10	10/10/23
11	CONSTRUCTION	10	10/10/23
12	CONSTRUCTION	10	10/10/23
13	CONSTRUCTION	10	10/10/23
14	CONSTRUCTION	10	10/10/23
15	CONSTRUCTION	10	10/10/23
16	CONSTRUCTION	10	10/10/23
17	CONSTRUCTION	10	10/10/23
18	CONSTRUCTION	10	10/10/23
19	CONSTRUCTION	10	10/10/23
20	CONSTRUCTION	10	10/10/23

ARMCORE
 CONSTRUCTION
 ARMCORE CONSTRUCTION LTD.

Paddington
 CONSTRUCTION LTD.
 100 Victoria Road, London, E16 1JH
 Tel: 020 8511 1111
 Email: info@paddingtonconstruction.co.uk

CLIENT: ARMCORE
 CONTRACT TITLE: TOWN HALL ROOF BALLUSTRADE
 DRAWING TITLE: TOWN HALL ROOF BALLUSTRADE SECTIONS
 PROJECT: [Signature]
 Scale: 1:100
 Date: 11/02/23
 Drawn: [Signature]
 Checked: [Signature]

This page is intentionally left blank